

TxDOT's Custom Map for GIS Roadway Network Workload Tracking

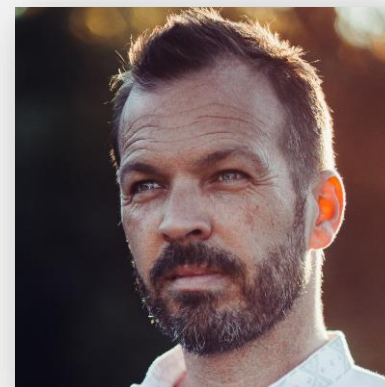
RETS – Roadway Edits Tracking System



October 29, 2024

About us

Within the Texas Department of Transportation – or TxDOT – the Mapping Branch manages the GIS roadway network.



Chris Bardash
Mapping Branch Manager



David Prosack
Senior GIS Analyst

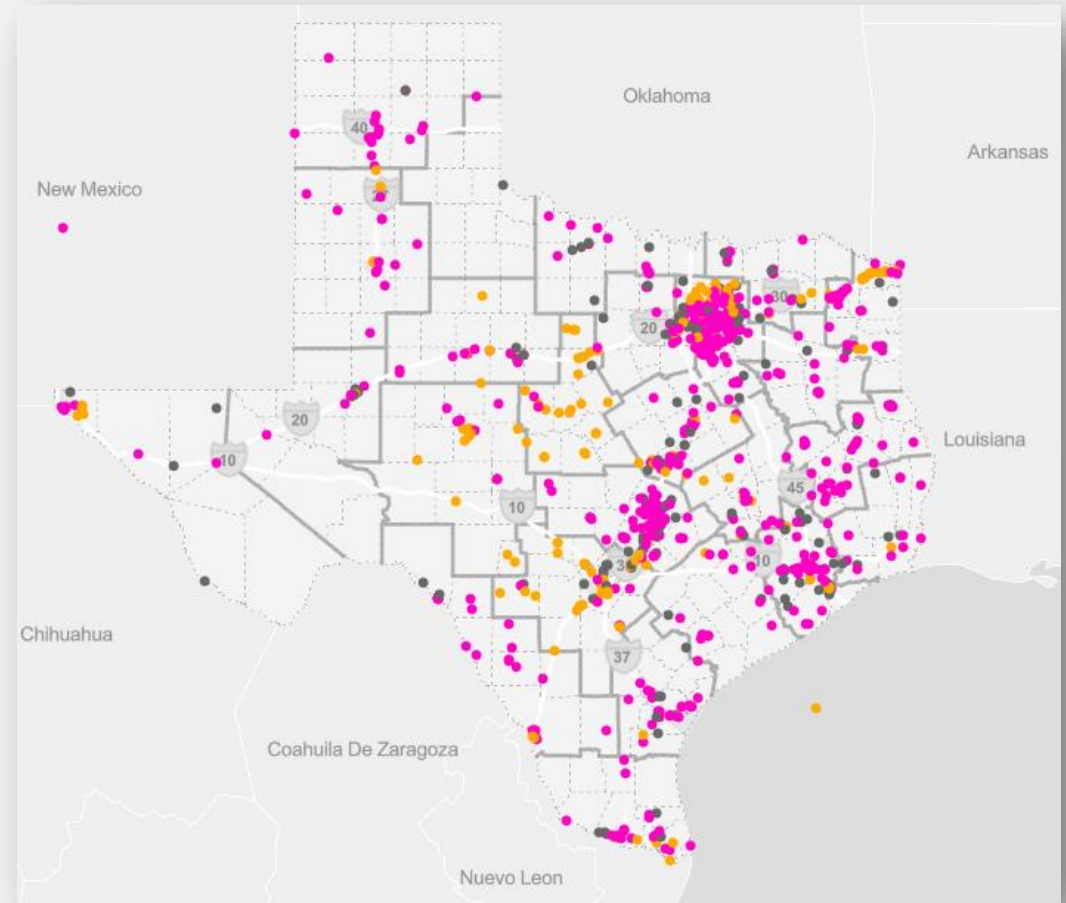


Travis Scruggs
Senior GIS Analyst

What is RETS?

Roadway Edits Tracking System

RETS is a custom map created by TxDOT to manage the workload for required roadway network edits.



Why should you care?

- Many organizations have statewide or regional workloads.
- Integrating with your production database is key to success.
- FME, specifically FME Flow, is a powerful resource.
- Team projects can ensure buy-in and build skills.



Why we developed it?

A simple list was inadequate

The previous version was a SharePoint list. Locations were sometimes lost.

Lacking functionality

The first version of the app – a custom web map – solved the spatial problem but was still difficult to filter and had limited options for documenting comments.

Roadway Edits Tracking

Stop editing this list

GIS and GRID ETL Incomplete Incomplete Priority ... Find an item

✓	ID	Status	MRT Task ID	Minute Order	On/Off System	Route	County	District	Description	Priority	Geometry Action
	1105	Not Started			Off System	184AA5068	Parker	FTW	Small gap in linework	No	Modify existing route/roadbed
	1104	Not Started			On System	S50729	King	CHS	realignment of SS 729	No	Modify existing route/roadbed
	1103	Not Started			On System	FM2519	Cameron	PHR	Straighten up intersection at begin of route with SH 4	No	Modify existing route/roadbed
	1102	Not Started			On System	FM1171-RG	Denton	DAL	At the end of the route the right roadbed needs to be corrected. Currently it over extends. It should end at the same location where the left roadbed meets the KG.	No	Modify existing route/roadbed

Roadway Edits Tracking System

City, County, District, Route, CSJ...

Add a Record

- Not Started (pink dot)
- In Progress (orange dot)
- Complete (green dot)
- Not Ready (black dot)
- On Hold (grey dot)

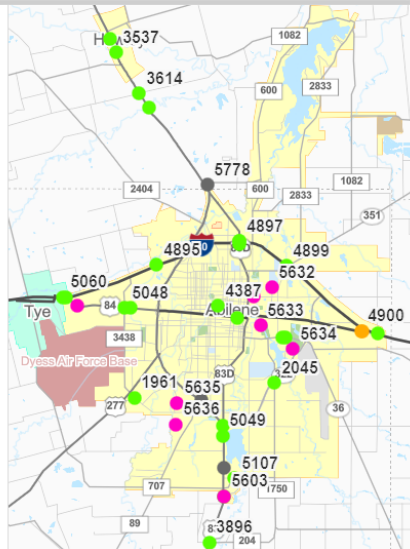
Basemaps

Statistics

Quick Filters

Advanced Query

Table Options



New Version

Improved user experience

The app is pre-filtered for the logged-in user, making it more personalized and focused on their needs.

Inbox organization

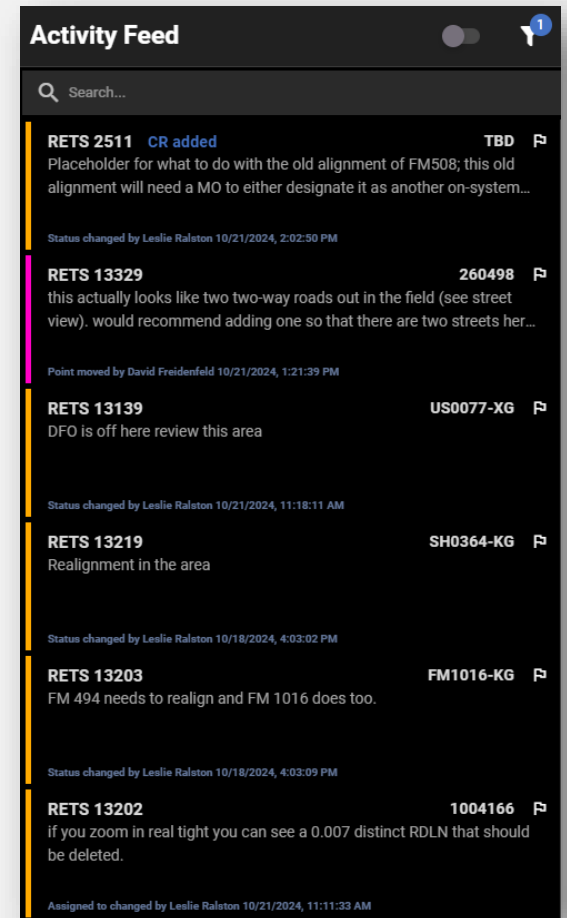
The new version of RETS is organized like an inbox, making it easier for users to navigate through the app and find the information they need.

Integrated database

The new version of RETS is integrated with TxDOT's GRID database, providing users with access to important data.

History feed

The history feed allows for a more in-depth conversation about each RETS.



Demo

Technical Details Overview

Back End:

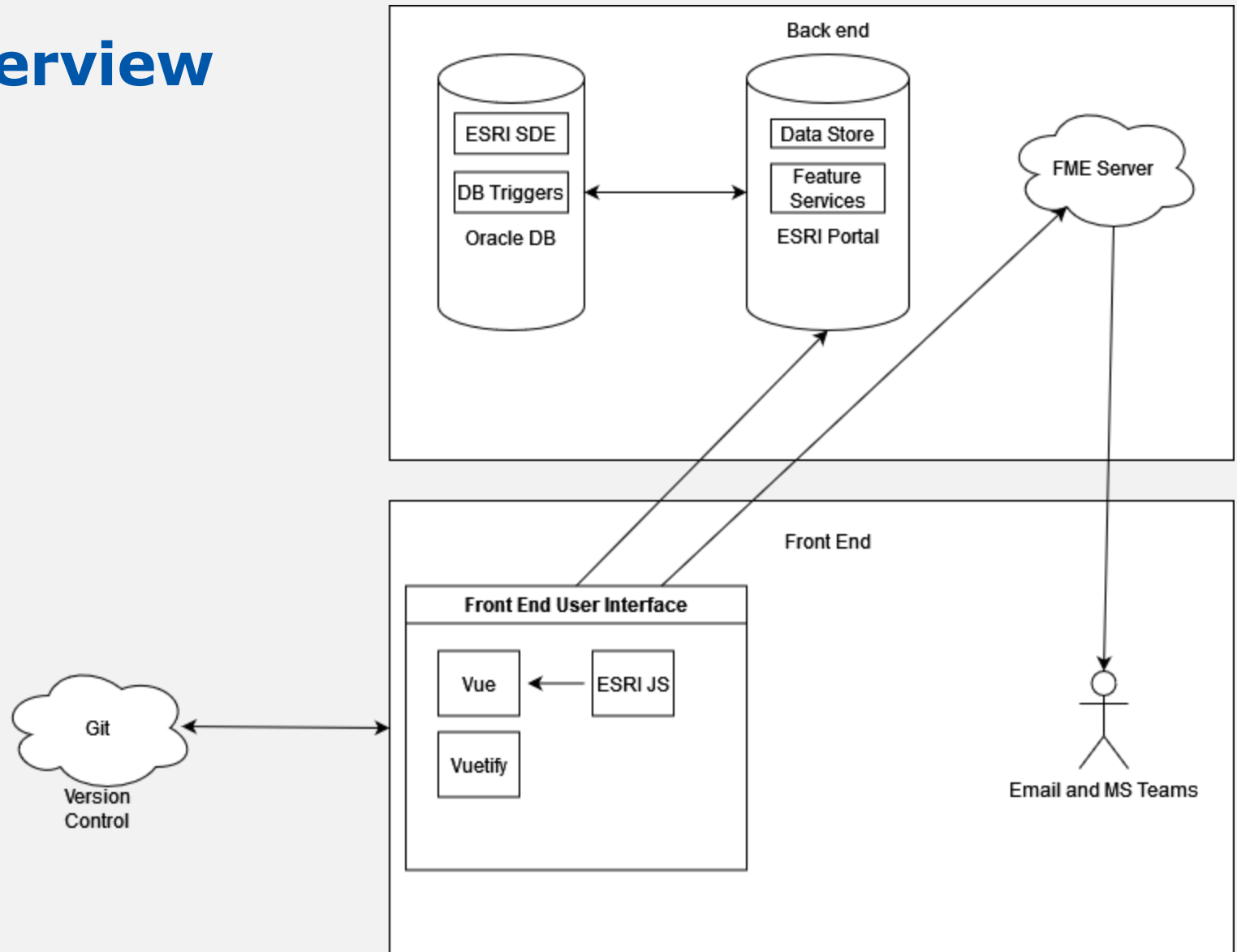
- Oracle database tables
- Enterprise Portal
 - Data store
 - Feature Services
- FME Flow

Front End:

- Esri JS API
- Vue/Vuetify

Other Tools:

- Git for version control



Oracle Database

Why connect with database directly?

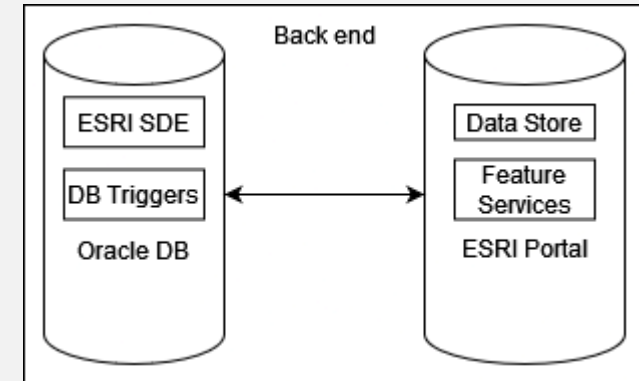
- Hosted Services reside on ESRI Servers
- Live data
- Connect with DB tables
- Use of DB functionality e.g. Triggers

How is it done?

- ESRI SDE Connection
- Link up with Data Store on ESRI Portal Server
- No write access to production data needed

Benefits

- Access to live production data
- Database triggers



Database Triggers and Stored Procedures

What Are They?

- Database Triggers:
 - Is a block of SQL code that is executed when the condition is met
- Stored Procedures:
 - A block of SQL code that must be explicitly invoked

Examples:

- *Archive on delete* - Puts deleted records into an archive table
- *Main comment trigger* - Monitors changes in activity, status, etc and adds comment/history item according to change
- *Move trigger* - Looks for geom changes and adds comment/history item
- *Pop Analyst* - Calculates district and populates users according to responsibility table
- *GEM task (stored procedure)* - Runs every hour looking for related GEM tasks in RETS. Adds comment/history item when completed

FME Flow (formerly FME Server)

What is FME Flow?

- Brings FME Form to a Server Environment

Why use it?

- Run multiple workbenches at once
- Additional Functionality that desktop doesn't provide
 - Webhooks
 - Automations

How it works?

- Server Services gives the ability to download and stream data back
- Directories hold your workbench

Use cases

- Data Check
- Send Emails based on different triggers
- Create your own DocuSign process



Vue.js, Vuetify and Esri SDK for JS

Why use Vue?

- Esri SDK JS can integrate with Vue via Node.js
- Vue is flexible and customizable
- Well maintained / documentation
- Provides numerous of tools
 - Routing
 - State Management

Vuetify

- Quickly add modern CSS styling and components
- Complies with Material Design Specification
- Integrates seamlessly with Vue



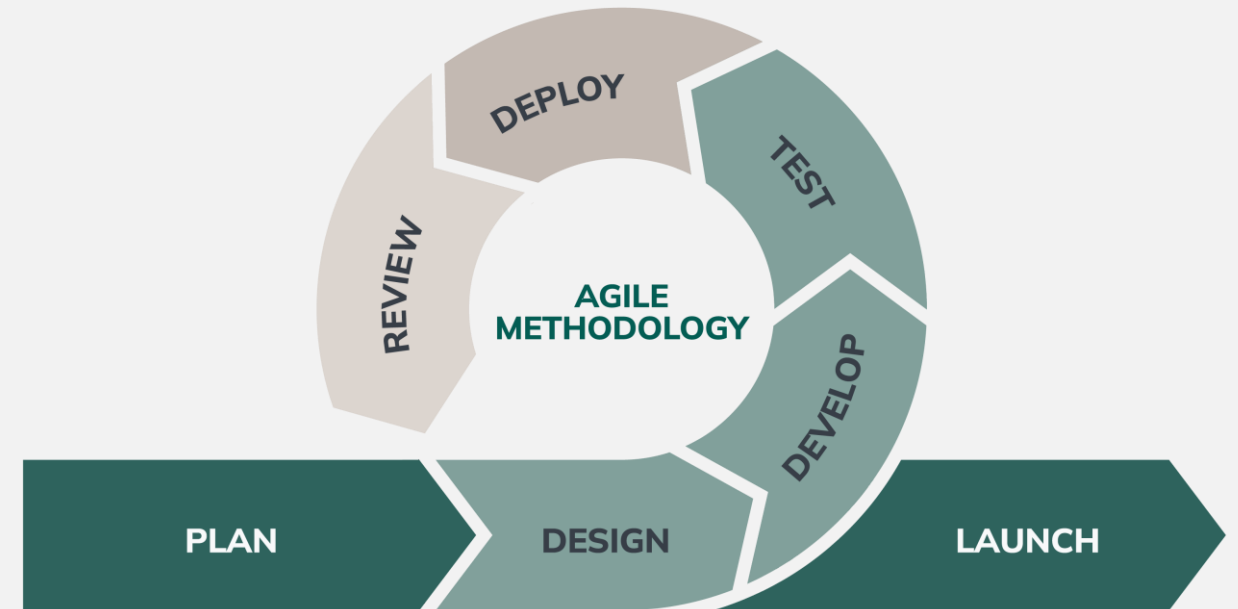
Group Project

- Team collaboration
 - Buy-in and ownership
 - Growth of skills
 - Mentorship
- Wider group testing and feedback



Agile...ish

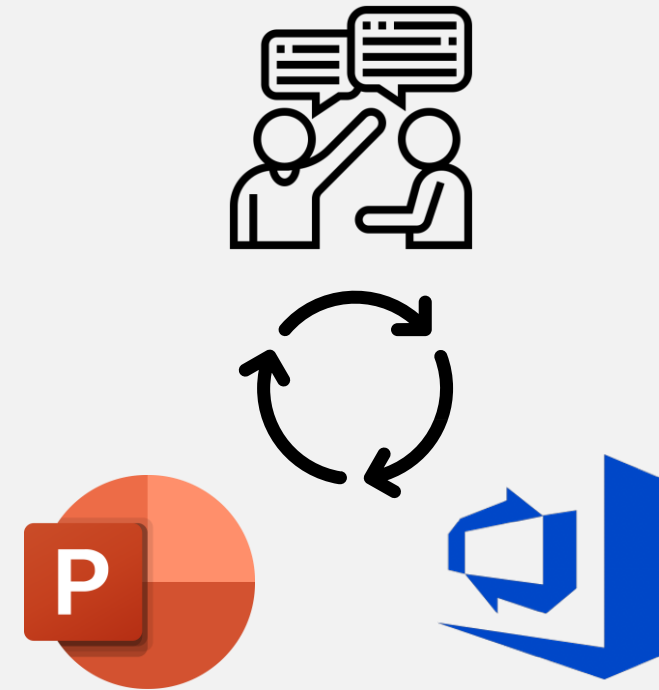
- Quasi “Agile” style development
 - E.g. user stories, decomp, sprints, user acceptance testing, bug fixes, deployment, etc.
- Fit the method to your team
- Roles and skills – Lean into team strengths
- Wider group testing and feedback



Credit: Nexapp.ca

Documentation and Resources

- Develop requirements
 - Break into “user stories”
- Mockups in PowerPoint
- Documented in Azure DevOps
 - Could use other organizational systems, like Trello
 - Stories don't have to be sequential
 - Sorting stories into sprints
 - Comment tracking!



The Team

John Phillips – Project and Back End Lead

Eric Kinsey – Back End Developer

David Prosack – Front End Lead

Salvador Saldana – Front End Developer

Chris Bardash – Design Lead

Brian Alt – DevOps Lead/Tester and Designer

Travis Scruggs – Designer/Tester



Key Takeaways



There are many use cases for a web map to manage work



Sometimes you have to go custom when out of the box apps don't provide enough functionality



Integration with your database of record is a powerful pairing



Using FME can add benefits for automation



Group projects build team morale, give everyone buy-in and opportunity to share and learn new skills